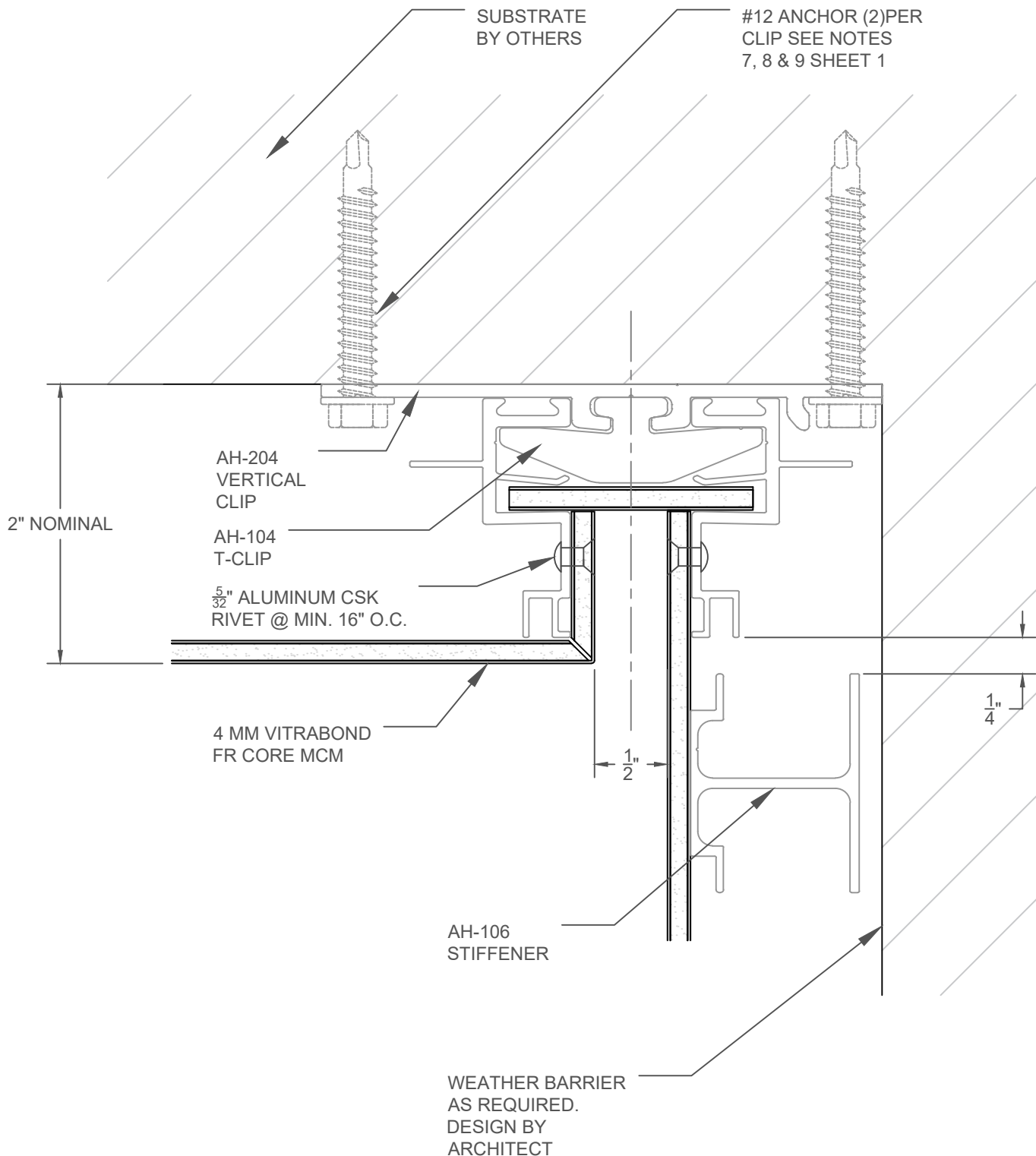


IF SELF TAPPING SCREWS
PENETRATE WEATHER
BARRIER, THESE LOCATIONS
MUST BE SEALED

#10 X 3/8" SELF TAPPING
SCREWS MAY BE USED WITH
EXTERIOR INSULATED WALLS.



Sheet	Drawn By JSJ	Project Number	Project	ARROWHEAD FLEX INSIDE CORNER DETAIL CLIP INSTALLATION © Copyright Fairview Architectural LLC - Patented and/or Patent Pending	 FAIRVIEW ARCHITECTURAL arrowhead ARCHITECTURAL PANEL SYSTEMS www.fairview-na.com
13	Date Drawn 10/12/23	DWG-01			
	Revisions				
	No 1 Date 1/18/21				